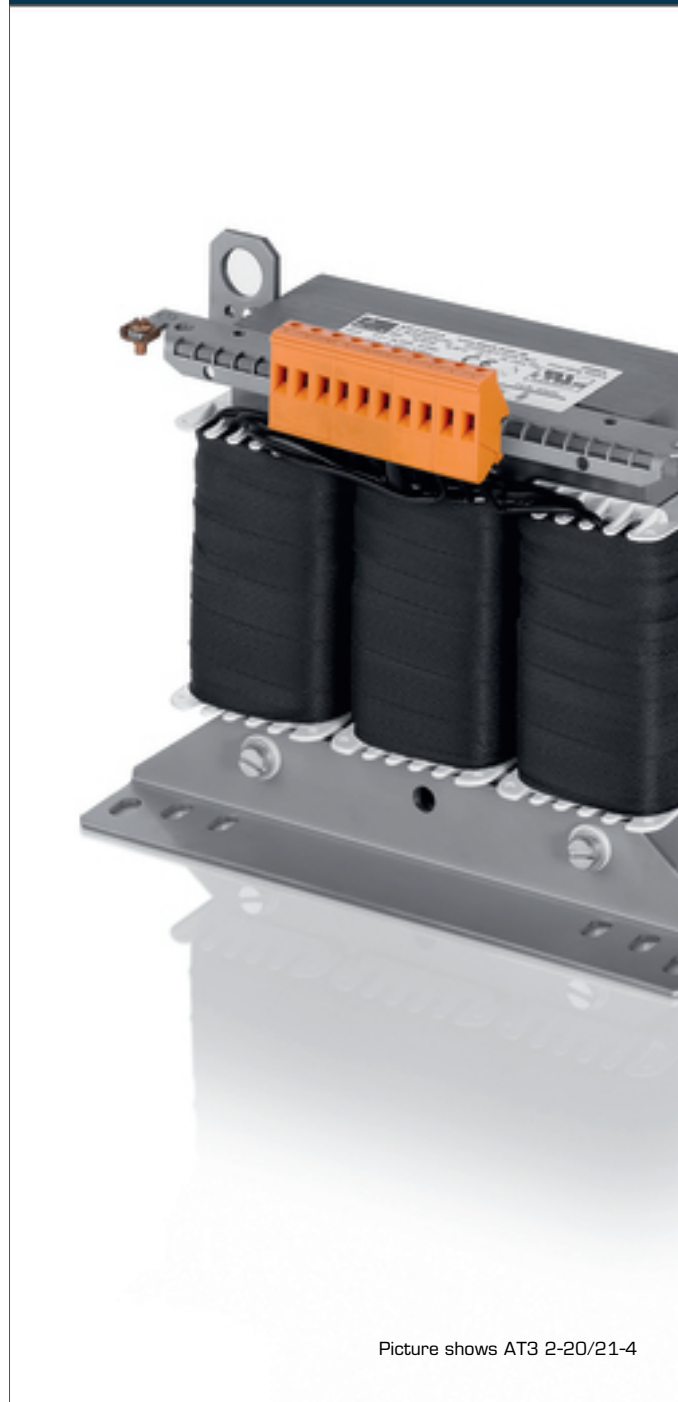


Autotransformer AT3 250-58/60-4



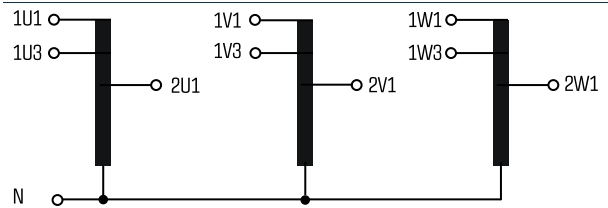
Advantages

- Low weight and small size (compared to isolating transformers)
- Very high efficiency
- Patented assembly technology to lower heat losses
- Very good corrosion protection and low noise thanks to vacuum impregnation
- Fixed, contact protected screw connection terminals complying with UVV BGV A3
- Multifunctional fixing rails with 12 oval slots
- Enlarged fixing rail for easy installation from above
- Integrated crane eyes

Applications

Autotransformer for adjustment of the voltage on the input and output sides with no requirement for electrical isolation.

Sample application



Standards

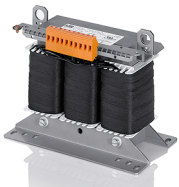


Autotransformer
to: VDE 0570 Teil 2-13, DIN EN 61558-2-13, EN 61558-2-13,
IEC 61558-2-13, UL 5085-1/-2, CSA 22.2 No.66

Approvals



UL 5085-1/-2, CSA 22.2 No.66



Autotransformer AT3 250-58/60-4

Type		AT3 250-58/60-4
Electrical data	Input	
	Rated input voltage	3 x 575/600 Vac
	Rated frequency	50 - 60 Hz
	Output	
	Rated output voltage	3 x 400 Vac
	Rated Power	250.000 VA
	Vector group	YNΔ0
	Efficiency	98.0 %
	Approvals	cURus
	Environment	
Ambient temperature max.	40 °C	
Safety and protection		
Type	Open type	
Insulation class	F	
Protection index	IP 00	
Safety class (prepared)	I	
Short circuit strength	non-short-circuit proof	
Test voltage	4000 Vac, 50 Hz	
Order numbers		
Recommended enclosure	BGE-095	
Order Number	AT3 250-58/60-4	

Type		AT3 250-58/60-4
Mechanical data	Terminal and mounting	
	Fixing method	Fixing rail
	Fixing screws	M12
	Terminals	Screw-type terminals
	Measures and weights	
	Core type	3 UI 300/150
	Weight	390.0 kg

